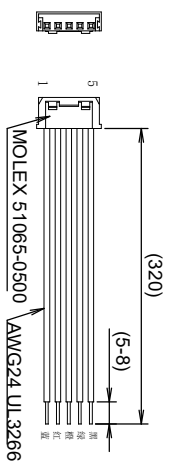
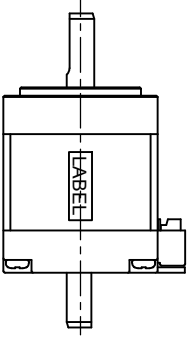
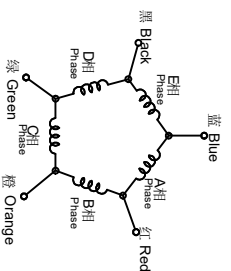
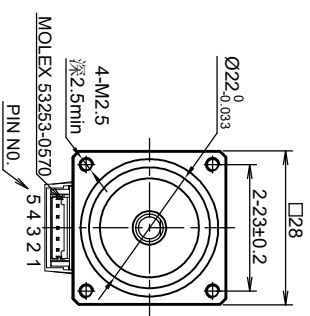
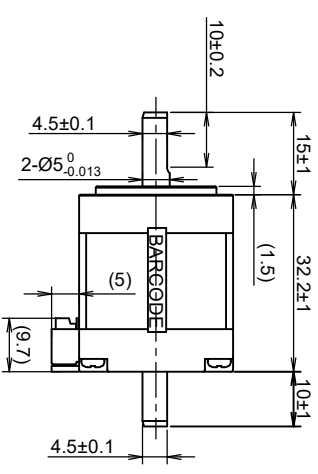
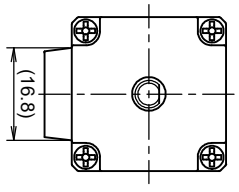


接线图 WINDING DIAGRAM



励磁顺序 vs 旋转方向
Exciting Sequence vs. Direction of Rotation

| STEP | 黑 | 绿 | 橙 | 红 | 蓝 |
|------|---|---|---|---|---|
| 1 | + | + | - | - | - |
| 2 | + | - | - | - | - |
| 3 | + | - | - | + | + |
| 4 | - | - | - | + | + |
| 5 | - | - | - | + | + |
| 6 | - | - | + | + | + |
| 7 | - | + | + | + | + |
| 8 | - | + | + | + | - |
| 9 | + | + | + | + | - |
| 10 | + | + | + | - | - |

从安装面看为顺时针方向
Clockwise view from mounting side

Barcode ID

barcode label

电机参数 MOTOR SPECIFICATIONS

| | |
|------------------------------|----------------------------|
| 步进角 STEP ANGLE | 0.72°±5% |
| 额定电流 RATED CURRENT | 1.2 Amps/PHASE |
| 保持力矩 HOLDING TORQUE | 0.05 N.m MIN. |
| 电阻 RESISTANCE | 0.56 ohm±0.15 AT 20°C |
| 电感 INDUCTANCE | 0.19 mH±20% AT 1kHz, 1Vrms |
| 转子惯量 ROTOR INERTIA | 9 g.cm ² |
| 绝缘等级 INSULATION CLASS | CLASS B |
| 绝缘耐压 DIELECTRIC STRENGTH | 500V A.C 1MINUTE |
| 防护等级 IP CODE | IP 20 |
| 重量 WEIGHT | 100 g |
| 温升 TEMPERATURE RISE | 80K MAX. |
| 运行环境温度 OPERATING TEMPERATURE | -10°C---+50°C |
| 允许轴向负载 SHAFT AXIAL LOAD | ---N |
| 允许径向负载 SHAFT RADIAL LOAD | ---N |

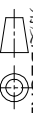
电机型号 MOTOR CODE

E5W11-112D

步进电机规格书

单位/UNIT: mm
未标注长度及角度默认公差
UNLESS OTHERWISE SPECIFIED TOLERANCES

长度/DIMENSIONS: ±0.3mm
角度/DEGREES: ±5%



ORTHOGRAHIC PROJECTION:
Motor inspection standard: QC-ZL-011

| REV. | DATE | REVISIONS | BY |
|------|----------|---------------|-------|
| A | 26-03-26 | first version | CAROL |

www.czaiwei.com



APPROVED
John